



PHOTO STUDIO &
SALON

CONTACT

+49 (0)30 3395 44 31
info@studiocherie.net
For urgent calls:
+49 (0)178 7808 676
Hobrechtstr. 65/ 66
12047 Berlin



GREENSCREEN/BLUESCREEN

Height: 3,20 m
Width: 5 m
Depth: 6 m
Chromagreen or Chromablue flooring.

Movable truss on the ceiling for adaptable
lighting concepts.
No soundproofing

Black curtains
WiFi
Audio system
Make-up & styling room
Open kitchen
Coffee machine, tea, beverages
2 toilets & bathroom
Elevator: 1.1 x 2.1 x 2.15m
Floor: Concrete
Walls: white painted bricks and smooth, white plaster

LIGHTING KITS

READY TO FILM 260.00 €/day

3 x ARRI 750 dimmable tungsten lights (convertible to daylight)
4 x Kinoflo 4ft 4Bank daylight and tungsten
2 x 2 KW ARRI dimmable tungsten lights (convertible to daylight)
2 x white-diffusion frames (1,5 x 1,5 meters)
2 x C-Stands with grip arm 40'
2 x CSU steel stands

BASIC TO FILM 30.00 €/day

3 x tungsten lamps ARRILITE 750 Plus incl. 4-leaf barndoor, 3 tripods,
set of scrims & filters

STUDIO 2

Green screen 90 € /setup - dismantling
Daily rate 600 €
Overtime: 90 €/h
From 9 AM to 7 PM
Sunday fee 20% of day rate

Size: 150 sq. m.
Ceiling height: 3.4m
4th floor

STUDIO 1

Green screen 90 € /setup - dismantling
Daily rate 750 €
Overtime: 100 €/h
From 9 AM to 7 PM
Sunday fee 20% of day rate

Size: 200 sq. m.
Ceiling height: 3.6m
3rd floor
High voltage current: 16 to 63A

ADDITIONAL SERVICES

Cleaning 50 € to 80 €
Tungsten and HMI lights: 0.40 €/kWh
Cold beverages
Catering on request
Studio assistant: on request
Storage and deliveries organisation

STUDIO 2 BASIC EQUIPMENT

- 2 x Light stands MF 6060
- 1 x 4-section crossbar background hanging rod (3.60m long / small diameter)
- 4 x White movable walls (3.40 x 1.75m)
- 6 x Foam boards (black/white) incl. stands
- Wall system with 3 hooks for Background paper
- 6 x Calumet Rubber-Coated "A" Clamps MF 1006 (medium)
- 4 x Studio Super Clamp Calumet MF 6820 for light stands
- 3 x Sandbags
- 2 x Extension cable
- 1 x Cable reel 25m
- 2 x Ventilators
- Ladder

MAKE-UP & STYLING

- Fan heater
- Steamer
- Ironing board
- Flat iron
- 3 x Clothes rails incl. 40 hangers

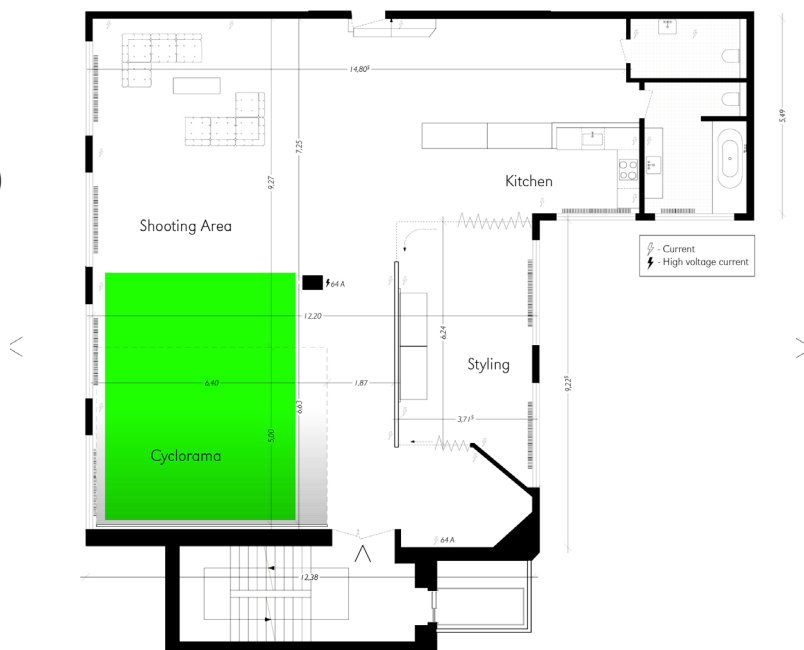


STUDIO 1 BASIC EQUIPMENT

- 2 x Light stands MF 6095
- 1 x 4-section crossbar background hanging rod (3.60m long / large diameter)
- 6 x Foam boards (black/white) incl. stands
- 2 x Calumet Rubber-Coated "A" Clamps MF 1004 (small)
- 7 x Calumet Rubber-Coated "A" Clamps MF 1006 (medium)
- 6 x Studio Super Clamp Calumet MF 6820 for light stands
- 10 x "Clip Clamp" Calumet MF 6822
- 6 x Sandbags
- 2 x Extension cable 5m
- 1 x Extension cable 10m
- 2 x cable reels 25m
- 3 x Mains distributors 3 sockets
- 1 x Main distributor 6 sockets
- Ventilator
- Ladder
- Transport carriage

MAKE-UP & STYLING

- Fan heater
- Steamer
- Ironing board
- Flat iron
- 3 x Clothes rails incl. 60 hangers



ADDITIONAL EQUIPMENT

Price per piece a day

CAMERA & LENS	
Studio tripod CAMBO UST 2.70m, foot U0, angle U-9 and cross arm U4	50.00€
Camera tripod XL MA161 MK2B with 3D Head M Geared - Manfrotto MA410	35.00€
Canon Camera 5D Mark II	95.00€
(incl. card reader, CF 16GB/160mbs, TetherPro USB 2.0 to Mini-B5-Pin 5m, extra battery)	
Canon EF 50/1.4	15.00€
Canon EF 100/2.8 L IS Macro	25.00€
Canon EF 24/2.8 IS	25.00€
Canon EF 35/1.4 L	30.00€
COMPUTER	
EIZO Monitor CX241 coloredge BK 24"	50.00€
FLASHLIGHT EQUIPMENT	
Generator Pro-7a 2400 Ws - asymmetrical	55.00 €
4 x Pro Heads Plus UV 500W incl. Zoom reflector	12.00 €
Pocket Wizard (air sync)	12.00 €
Flash Synchro-cable (5m)	3.00 €
Flash Synchro-cable (10m)	5.00 €
2 x Umbrella Silver/White/Diffusor 1.15m	5.00 €
1 x Profoto Octa 5 foot Softbox	30.00 €
1 x Medium Softbox 2x3' Profoto RFI	15.00 €
2 x Small Softbox 1x3' Profoto RFI	10.00 €
4 x Speedring Adapter Profoto RFI	5.00 €
1 x Beauty Dish	16.00 €
1 x Reflector zebra gold/white with black aluminium frame (1 x 2m)	16.00 €
CONTINUOUS LIGHT	
ARRI Arrilite 750 Plus 3 tungsten lightning kit (incl. 4-leaf barndoor, 3 tripods, set of scrims & filters)	30.00 €
4 x Kinoflo 4ft 4Bank daylight and tungsten	70.00 €
2 x 2 KW ARRI dimmable tungsten lights (convertible to daylight)	20.00 €
STANDS	
2 x Manfrotto Stativ (Double) Wind-Up 087 NW on wheels	15.00 €
2 x Steel Heavy Duty stand 126CSU (3.33m max hight)	10.00 €
3 x Manfrotto MA1004 BAC	4.00 €
1 x Calumet MF 6040 (1.22m max hight)	2.00 €
2 x C-Stand Avenger 40" Manfrotto silber (with Grip Arm 50cm Ausleger)	12.00 €
2 x C-Stand Avenger 40" Manfrotto silber (with Grip Arm 100cm Ausleger)	12.00 €
1 x Super Boom with counter weight (4kg / 5kg) and Pivot Clamp	20.00 €
2 x Manfrotto MA143N Magic Arm	5.00€
1 x Aluminium background hanging rod (5m)	10.00€
2 x Manfrotto Black Autopole 032 (extends from 2.1m to 3.7m)	10.00€
CABLING	
1 x ProHead extension Profoto-PCK2010 (5m)	10.00€
2 x CEE adapter power current 16A plug 5-pole to CEE 230V 3-pole coupling	5.00€
1 x 3 pole 230V-16A extension 5m (blue)	6.00€
1 x 5 pole 400V-16A extension 5m (red)	6.00€
1 x 3 pole 230V-16A extension 10m (blue)	7.00€
1 x 5 pole 400V-16A extension 10m (red)	7.00€
GELS & OTHER	
2 x white-diffusion frames (1,5 x 1,5 meters)	10.00€
Calumet Background paper	
(Arctic White, Black, Storm Gray, Seal Gray, Chromatic Green etc)	10.00 €/m
3 Apple Box set	15.00 €
Extra hanger	1.00 €

TERMS & CONDITIONS

CANCELLATION FEES

The tenant can withdraw from the contract up to a time of one week before the agreed beginning of rent free of charge. From the time of one week until the time of exactly 48 hours before the rental date, cancellation fees of 50% of the agreed rent are payable. From the time of less than exactly 48 hours before the start of the lease but more than 24 hours before the start of the lease, 75% of the agreed rent is payable. After the last date, the full rental minus any saved expenses of the landlord is payable. As far as a different rental is possible, the cancellation costs corresponding to the amount of the rent received elsewhere.

DELIVERY / PARKING VEHICLES

The access to the yard and thus the parking in the yard is excluded for insurance reasons.

For loading and unloading vehicles can stop in front of the gate and use Studio Chérie's transport carts.

Parking is available in the surrounding area or in the car park Karstadt - Hermannplatz.

For Equipment transporters & catering trucks, an unloading zone permit can be registered by customers in prior to the shooting to the [Berlin Services & permits dept.](#)

TERMS OF PAYMENT

The agreed rent is payable immediately after invoicing by the landlord and without deductions. For regular business customers based in Germany, 70% of the rent is due on booking confirmation. New customers based in Germany and customers with headquarters outside Germany is a 100% deposit plus a copy of the ID or business registration required. The rental price includes all ancillary costs in the sense of the operating cost regulation (energy, heating, water). For the organization and storage of equipment and supplies, a service fee will be charged depending on the effort. The landlord is entitled to charge the rent or parts thereof by separate agreement in advance. Failure to comply with payment dates entitles the landlord to immediately terminate the lease.

All prices are exclusive of the applicable value added tax. Offsetting against earlier or future claims is excluded, unless they are undisputed or legally binding. Irrespective of this, the contractually agreed rental price must be paid in full, irrespective of whether the premises or equipment were actually used to the agreed extent by the hirer. For bookings from abroad, the total amount must be paid in advance via bank transfer, Paypal or at the beginning of the rental period in cash.

Equipment, catering, drinks and other services, such as set building, painting or assistance are not included in the studio rent and will be charged separately.

The use of continuous light (Tungstene and HMI) will be charged additionally with 0,40 € per kw / h. As far as the landlord on behalf of the tenant contracts with third parties, such. for equipment, catering or the like, these costs are in any case by the tenant at the end of the lease in cash or cash in advance in the landlord to settle in detail.

RENT PERIOD

The rent indicated in the price list is a daily rent and includes a maximum rental period from 9am to 7pm or 8am to 6pm. The agreed rental period is to be observed. If the tenant is in arrears with the eviction, then he will be charged an overtime per hour in excess of the basic rent. The premises are completely vacated and left in their original condition at the end of the rental period. Exceptions require the written permission of the landlord.

Each started hour is counted as a full hour.

Overtimes are limited to 10pm from Monday to Friday and until 9pm on weekends.

The studio opens on weekends at 9am.

Due to internal organization, all previous arrivals or later departures as well as deliveries - pickups must be discussed in advance with the studio team.

The noise caused by the tenant due to possible sources of noise (strobos, music, setup / dismantling, etc.) must be maintained at a moderate level.

For damage and loss of the rental object and the building, the associated facilities and equipment and property damage and personal injury, including any consequential damage, the lessee is liable for compensation, as far as this damage caused by him or the persons belonging to its production or by third parties culpably, who are in the rented rooms with his knowledge and with his acquiescence or at his instigation.

Please note our terms and conditions at www.studiocherie.net> contact> terms and conditions.