



PHOTO STUDIO &
SALON

CONTACT

+49 (0)30 956 20 902
info@studiocherie.net
For urgent calls:
+49 (0)178 7808 676
Hobrechtstr. 65/ 66
12047 Berlin



GREENSCREEN/BLUESCREEN

Height: 3,20 m
Width: 5 m
Depth: 6 m
Chromagreen or Chromablue flooring.

Movable truss on the ceiling for adaptable lighting concepts.
No soundproofing

Black curtains
WiFi
Audio system
Make-up & styling room
Open kitchen
Coffee machine, tea, beverages
2 toilets & bathroom
Elevator: 1.1 x 2.1 x 2.15m
Floor: Concrete
Walls: white painted bricks and smooth, white plaster

LIGHTING KITS

READY TO FILM 260.00 €/day

3 x ARRI 750 dimmable tungsten lights (convertible to daylight)
4 x Kinoflo 4ft 4Bank daylight and tungsten
2 x 2 KW ARRI dimmable tungsten lights (convertible to daylight)
2 x white-diffusion frames (1,5 x 1,5 meters)
2 x C-Stands with grip arm 40'
2 x CSU steel stands

BASIC TO FILM 30.00 €/day

3 x tungsten lamps ARRILITE 750 Plus incl. 4-leaf barndoor, 3 tripods, set of scrims & filters

STUDIO 2

Daily rate incl. greenscreen 690 €
Overtime: 90 €/h
From 9 AM to 7 PM
Sundays: 80 € extra charge

Size: 150 sq. m.
Ceiling height: 3.4m
4th floor

STUDIO 1

Daily rate incl. greenscreen 840 €
Overtime: 100 €/h
From 9 AM to 7 PM
Sundays: 80 € extra charge

Size: 200 sq. m.
Ceiling height: 3.6m
3rd floor
High voltage current: 16 to 64A

ADDITIONAL SERVICES

Cleaning 50 € to 80 €
Tungsten and HMI lights: 0.40 €/kWh
Cold beverages
Catering on request
Studio assistant: on request
Storage and deliveries organisation

STUDIO 2 BASIC EQUIPMENT

- 2 x Light stands MF 6060
- 1 x 4-section crossbar background hanging rod (3.60m long / small diameter)
- 4 x White movable walls (3.40 x 1.75m)
- 6 x Foam boards (black/white) incl. stands
- Wall system with 3 hooks for Background paper
- 6 x Calumet Rubber-Coated "A" Clamps MF 1006 (medium)
- 4 x Studio Super Clamp Calumet MF 6820 for light stands
- 3 x Sandbags
- 1 x Extension cable
- 2 x Ventilators
- Ladder
- Transport carriage

MAKE-UP & STYLING

- Fan heater
- Steamer
- Ironing board
- Flat iron
- 3 x Clothes rails incl. 40 hangers

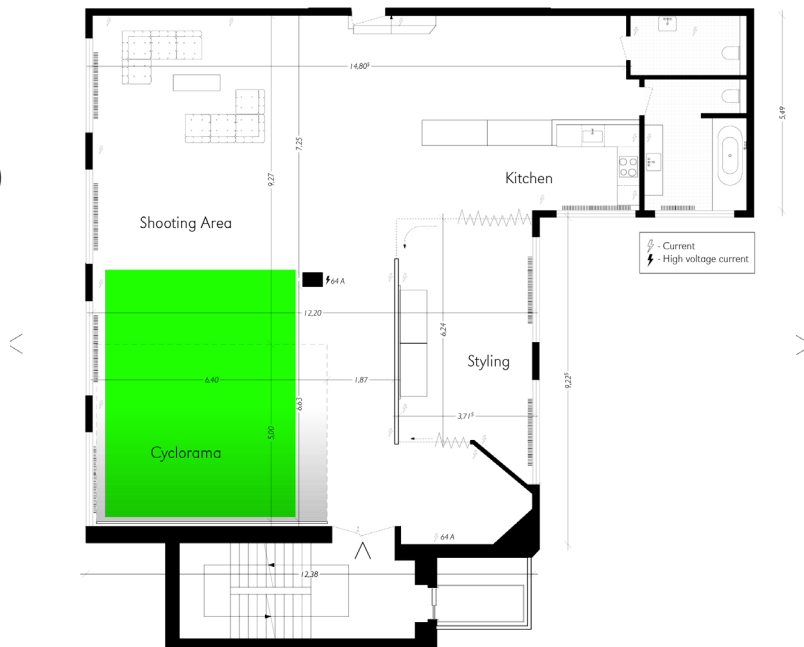


STUDIO 1 BASIC EQUIPMENT

- 2 x Light stands MF 6095
- 1 x 4-section crossbar background hanging rod (3.60m long / large diameter)
- 6 x Foam boards (black/white) incl. stands
- 2 x Calumet Rubber-Coated "A" Clamps MF 1004 (small)
- 7 x Calumet Rubber-Coated "A" Clamps MF 1006 (medium)
- 6 x Studio Super Clamp Calumet MF 6820 for light stands
- 10 x "Clip Clamp" Calumet MF 6822
- 6 x Sandbags
- 2 x Extension cable 5m
- 1 x Extension cable 10m
- 1 x Extension cable 50m
- 2 x 3-pin power cable 5m
- 3 x Mains distributors 3 sockets
- 1 x Main distributor 6 sockets
- Ventilator
- Ladder

MAKE-UP & STYLING

- Fan heater
- Steamer
- Ironing board
- Flat iron
- 3 x Clothes rails incl. 60 hangers



ADDITIONAL EQUIPMENT

Price per piece a day

CAMERA & LENS

Camera tripod XL MA161 MK2B with 3D Head M Geared - Manfrotto MA410	35.00€
Canon Camera 5D Mark II (incl. card reader, CF 16GB/160mbs, TetherPro USB 2.0 to Mini-B5-Pin 5m, extra battery)	95.00€
Canon EF 50/1.4	15.00€
Canon EF 100/2.8 L IS Macro	25.00€
Canon EF 24/2.8 IS	25.00€
Canon EF 35/1.4 L	30.00€

COMPUTER

EIZO Monitor CX241 coloredge BK 24"	50.00€
-------------------------------------	--------

FLASHLIGHT EQUIPMENT

Generator Pro-7a 2400 Ws - asymmetrical	55.00 €
4 x Pro Heads Plus UV 500W incl. Zoom reflector	12.00 €
Pocket Wizard (air sync)	12.00 €
Flash Synchro-cable (5m)	3.00 €
Flash Synchro-cable (10m)	5.00 €
2 x Umbrella Silver/White/Diffusor 1.15m	5.00 €
1 x Profoto Octa 5 foot Softbox	30.00 €
1 x Medium Softbox 2x3' Profoto RFI	15.00 €
2 x Small Softbox 1x3' Profoto RFI	10.00 €
4 x Speedring Adapter Profoto RFI	5.00 €
1 x Beauty Dish	16.00 €
1 x Reflector zebra gold/white with black aluminium frame (1 x 2m)	16.00 €

CONTINUOUS LIGHT

ARRI Arrilite 750 Plus 3 tungsten lightning kit (incl. 4-leaf barndoor, 3 tripods, set of scrims & filters)	30.00 €
4 x Kinoflo 4ft 4Bank daylight and tungsten	70.00 €
2 x 2 KW ARRI dimmable tungsten lights (convertible to daylight)	20.00 €

STANDS

2 x Manfrotto Stativ (Double) Wind-Up 087 NW on wheels	15.00 €
2 x Steel Heavy Duty stand 126CSU (3.33m max hight)	10.00 €
3 x Manfrotto MA1004 BAC	4.00 €
1 x Calumet MF 6040 (1.22m max hight)	2.00 €
2 x C-Stand Avenger 40" Manfrotto silber (with Grip Arm 50cm Ausleger)	12.00 €
2 x C-Stand Avenger 40" Manfrotto silber (with Grip Arm 100cm Ausleger)	12.00 €
1 x Super Boom with counter weight (4kg / 5kg) and Pivot Clamp	20.00 €
2 x Manfrotto MA143N Magic Arm	5.00€
1 x Aluminium background hanging rod (5m)	10.00€
2 x Manfrotto Black Autopole 032 (extends from 2.1m to 3.7m)	10.00€

CABLING

1 x ProHead extension Profoto-PCK2010 (10m)	10.00 €
---	---------

GELS & OTHER

2 x white-diffusion frames (1,5 x 1,5 meters)	10 €
Calumet Background paper (Arctic White, Black, Storm Gray, Seal Gray, Chromatic Green etc)	10.00 €/m
3 Apple Box set	15.00 €
Extra hanger	1.00 €

TERMS & CONDITIONS

COSTS OF CANCELLATION

The lessee can withdraw from the contract up to one week prior to the agreed start of the lease free of charge. If the cancellation is made between one week and exactly 48 hours prior to the commencement of the lease, cancellation fees amounting to 50% of the agreed rent shall become payable.

If the cancellation is between exactly 48 hours prior to the start of the lease but longer than 24 hours before the lease commences, 75% of the agreed rent shall become payable.

Subsequent to this last-mentioned time, the full rent shall be payable, less any expenses saved on the part of the lessor. If an alternative letting out is possible, the costs of cancellation shall be reduced in accordance with the amount of the alternative rent taken in.

PARKING OF VEHICLES

Unfortunately it is not possible to park in the courtyard.

For editorials, test shootings and castings a special price can be arranged.

Catering, extended catalogue production & film production prices on demand.

Please note that all the prices are indicated before taxes.

Find the additional terms & conditions on www.studiocherie.net > Contact > AGB